

DAVID'S DOZER
V-L**C**
SYSTEM



Model Number _____ VLOC _____.

Serial Number _____.

Serial Numbers 120113 – Current
Manufacture Date 08/07/15 – Current

Phone: 305-246-3141

Revised 7/19/2021

Features of V-Loc Dozer Blade includes:

- 3 1/2" bore, 8" stroke cylinders with 1 3/4" rods and 1 9/16" cylinder pins.
- 2 1/8" diameter pivot pin and oscillation pin.
- Bushings at all pivot locations.
- Heavy duty frame with adjustable skid shoes.
- 5/8" x 8" double bevel, reversible wear edge.
- 30° blade angle, left or right discharge and tilts 10°.
- Recommended for skid loaders with a lift capacity greater than 1800 lb.
- The roll and yaw functions of the V-Loc Blade are controlled by the auxiliary hydraulics on the skid loader.

MODEL	DZR72	DZR84	DZR96
Overall Width (Inches)	74	86	98
Height: Overall / Blade	28.1 / 25.8		
Overall Depth (Inches)	38		
Blade Angle (Degrees)	+/- 30		
Width at Full Angle (Inches)	64.1	74.5	84.9
Blade Oscillation (Degrees)	+/- 10		
Moldboard Thickness (Inches)	0.375		
Cutting Edge (Inches)	5/8 x 8 Bolt-on		
Cylinder Bore / Stroke (Inches)	3.5 / 8.0		
Pins: Cylinder / Hinge / Oscillation (Inches)	1.563 / 2.125 / 2.125		
Approximate Weight (Pounds)	1510	1575	1640
Recommended Loader Capacity	Greater than 1800 pounds		

Initial Use

- See following pages for suggested hose routing.
- Check that the quick-tach of the V-Loc Blade fits onto skid loader properly. Pins must engage through 3/8" plates at bottom of quick-tach.
- With bottom of the blade touching ground/floor, slowly roll back attachment. Make sure there is no interference between attachment and loader.
- Connect the hydraulic hoses to the standard auxiliary hydraulic couplers.
- Do not connect this attachment to high flow couplers.
- Connect the wiring harness to the machines auxiliary electrical pin connector outlet.
- Make sure hoses and cable do not pinch during roll back.
- Cycle the blades roll and yaw movements by engaging the machines auxiliary hydraulics into constant flow and pressing the buttons on the machine's left/right joysticks.
- Check for oil leaks per instructions in "Maintenance" section.
- Read and understand all warning information in this manual before operating this attachment.
- Never exceed the maximum attachment operating pressure of 3500 psi.

Operation

- Always follow safety information.
- Keep bystanders back 50 feet.
- Always follow all safety and operating instructions of skid loader.
- Always relieve pressure before disconnecting hydraulic hoses.
- Never hit or pound couplers.
- Never ram piles, push loads, or objects in excess of skid loader/blade capacity. Damage to blade and/or skid loader may occur.
- Never hook a chain on this attachment.
- Check for debris in quick-tach area before each hook-up.
- Do not lift or carry people on the blade.
- Never work under a raised blade.
- Check your work area and know where all utility lines are. Avoid hitting underground electrical wires, cables, pipes, fence post, gas lines, large rocks, etc...

Maintenance

*Every 10 hours of operation

- Grease pivot pin (2 fittings), oscillation pin, and cylinder pins (9 grease fittings total).
- Inspect all fasteners. Make sure they are in place and holding mating parts securely.
- Inspect cylinders, hydraulic fittings, and hoses for leaks and damage. Replace as needed. Make sure skid loader is shut off and hydraulic pressure is relieved before checking for leaks. Never use hands to check for high pressure hydraulic leaks.

*Every 50 hours of operation

- Check that cylinder, pivot and oscillation pins are secure.
- Check for loose, worn, or missing parts. Repair or replace as needed.
- Check cutting edge wear. Reverse or replace edge as needed.
- Contact your dealer for replacement parts.

Labels on Dozer Blade Attachment



5263PP – PINCH POINT WARNING LABEL

Always keep hands clear of grapple when skid loader hydraulic system is operational.



5264PP – CRUSH HAZARD WARNING LABEL

Always stay clear of grapple jaws. Never inspect grapple with skid loader running or with jaws open.

Labels on Dozer Blade Attachment (cont.)

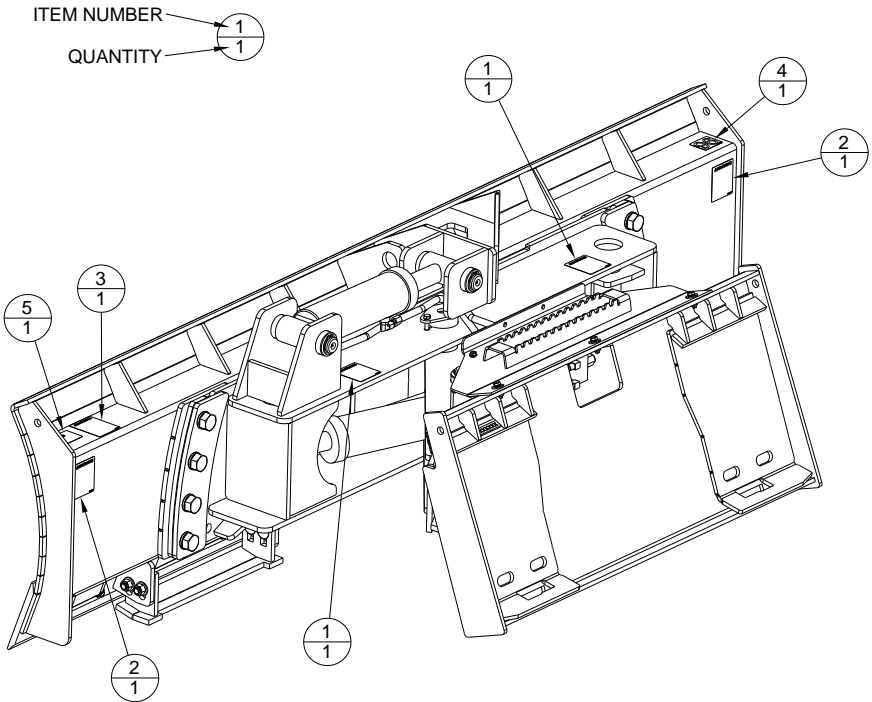


5265PP – HYDRAULIC WARNING LABEL

This label has several important instructions that must be followed for safe operation of this attachment.

Dozer Blade Label Parts List

ITEM	PART NO.	QTY	DESCRIPTION
1	DD-LB-5263	2	PINCH POINT WARNING LABEL
2	DD-LB-5264	2	CRUSH HAZARD WARNING LABEL
3	DD-LB-5265	1	HYDRAULIC WARNING LABEL
4	DD-LB-9397	1	72 WIDTH LABEL
	DD-LB9399		84 WIDTH LABEL
	DD-LB9401		96 WIDTH LABEL
5	DD-SNT	1	SERIAL NUMBER TAG



V-Loc System Parts List

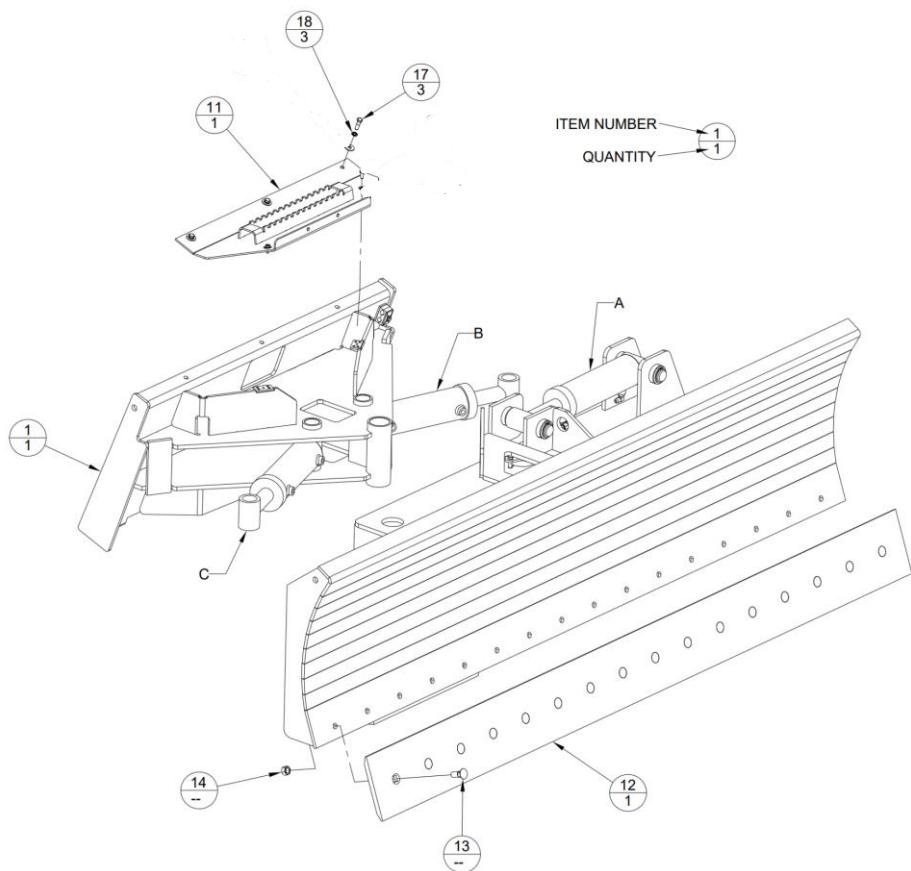
ITEM	PART NO.	QTY	DESCRIPTION
	1 DD-7536	1	DOZER QUICK-TACH WELDMENT
	2 DD-7537	1	DOZER TILT FRAME WELDMENT
A	3 -----	1	DOZER MOLDBOARD WELDMENT
	4 DD-7575	2	DOZER SKIDSHOE WELDMENT
	5 DD-7578	2	DOZER SPACER THIN
	6 DD-7579	2	DOZER 1/2" SPACER
	7 DD-7580	2	DOZER CLAMP FLAT
	8 DD-7581	1	DOZER PIN RETAINER
	9 DD-7586	1	DOZER PIVOT OSCILLATION PIN
	10 DD-7587	1	DOZER PIVOT PIN
	11 DD-8875	1	DOZER BLADE STEP WELDMENT
A	12 -----	1	BOLT ON EDGE 5/8" x 8"
A	13 DD-5585	-	5/8"-11 X 1 3/4" LG PLOW BOLT
A	14 DD-1008	-	5/8"-11 TOP LOCK NUT
	15 DD-7790	8	5/8"-11 X 2" LG CB
	16 DD-7957	8	5/8" SAE FLAT WASHER
	17 DD-7849	3	3/8"-16 X 1" LG HHCS
	18 DD-1075	3	3/8" LOCK WASHER
	19 DD-7229	3	DOZER BLADE CYLINDER
	20 DD-5194	6	CLAM PIVOT PIN
	21 DD-1097	12	1 9/16" X 10GA MACH BUSHING
	22 DD-1098	12	1 9/16" EXTERNAL SNAP RING
	23 DD-1034	9	1/4"-28 STRAIGHT GREASE ZERK
	24 DD-5586	24	1 9/16" DIA X 1 9/16" LG BUSH
	25 DD-6676	8	1"-8 X 3 1/2" LG HHCS
	26 DD-6677	8	1" LOCK WASHER
	27 DD-5225	1	1/2" -13 X 1 3/4" LG HHCS
	28 DD-8712	1	1/2" LOCK WASHER HIGH ALLOY
	29 DD-7789	5	2 3/16" DIA X 1 7/8" LG BUSH
	30 DD-6721	2	3/8"-16 X 2 1/4" LG HHCS
	31 DD-6140	4	3/8"-16 TOP LOCK FLANGE NUT
	32 DD-HHP	1	PRESSURE HOSE
	33 DD-HHT	1	TANK HOSE
	34 DD-HHR-1	1	ROLL HOSE FOR VALVE PORT A
	35 DD-HHR-2	1	ROLL HOSE FOR VALVE PORT B
	36 DD-HHL-1	1	LIFT HOSE FOR VALVE PORT A
	37 DD-HHL-2	1	LIFT HOSE FOR VALVE PORT B
	38 DD-HHY-T	2	YAW HOSE VALVE-TO-TEE
	39 DD-HHY-L1	1	YAW HOSE, BOTTOM TEE LEFT BASE
	40 DD-HHY-L2	1	YAW HOSE, TOP TEE LEFT ROD

V-Loc System Parts List (cont.)

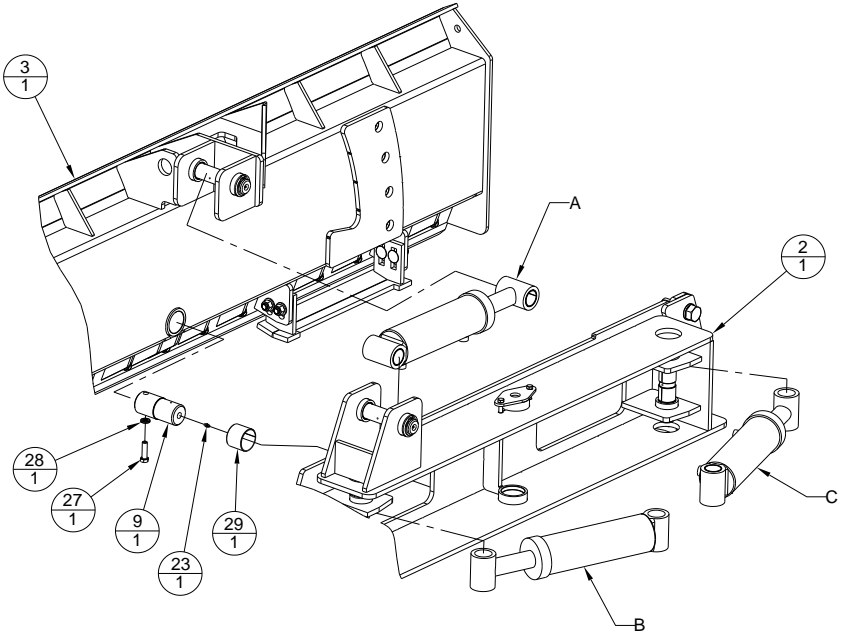
41	DD-HHY-R1	1	YAW HOSE, TOP TEE RIGHT BASE	
42	DD-HHY-R2	1	YAW HOSE, BOTTOM TEE RIGHT ROD	
*	43	DD-HHA-1	1	BOOM HOSE FOR RAISE
*	44	DD-HHA-2	1	BOOM HOSE FOR LOWER
45	DD-EM-X2	1	V-LECTRAL X2 AUTOMATION MODULE	
*	46	DD-E-14	1	14 PIN HARNESS
47	DD-E-V	1	VALVE HARNESS	
*	48	DD-E-HE	1	HYDRAULIC EXTENSION HARNESS
*	49	DD-E-HO	1	HYDRAULIC OUTPUT HARNESS
50	DD-BSP-1	1	LEFT SIDE PLATE	
51	DD-BSP-2	1	RIGHT SIDE PLATE	
*	52	DD-VLOC-1	1	LEFT V-LOC BRACKET
*	53	DD-VLOC-2	1	RIGHT V-LOC BRACKET

* Parts marked with asterisks vary depending on the CTL (compact track loader) brand that the V-Loc System is configured for. Please specify your CTL's brand when inquiring about these parts.

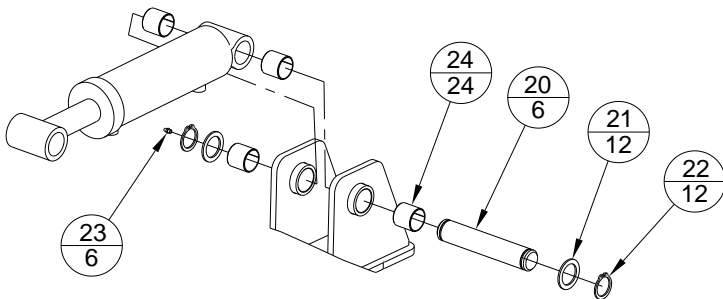
Main Component Assembly



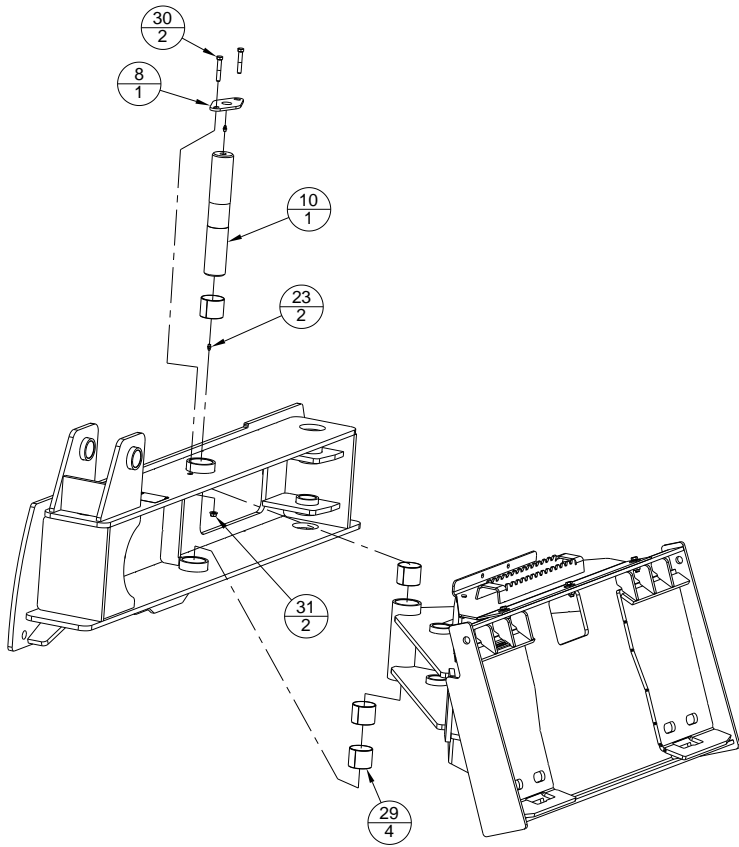
Oscillation Pin Installation



Cylinder Pin Installation



Pivot Pin Installation



Skid Shoe Installation

